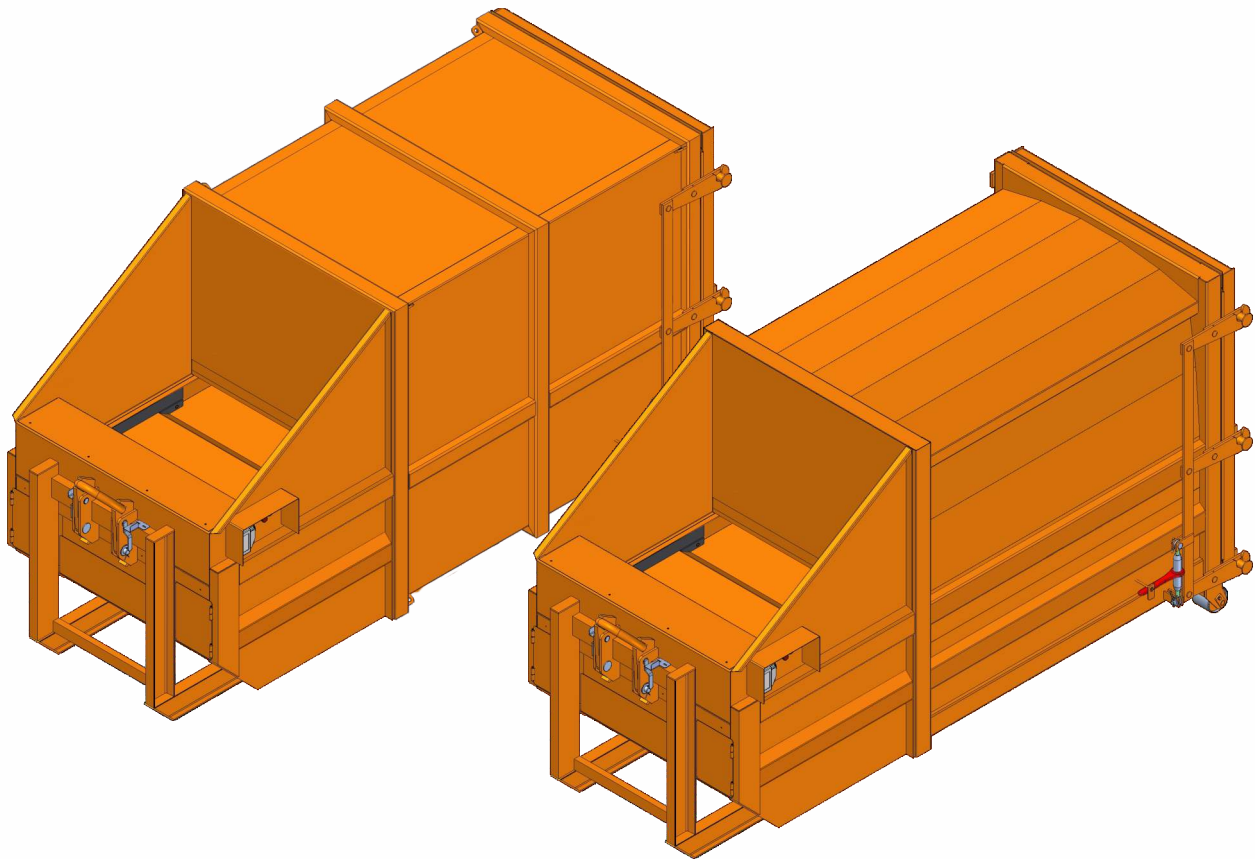


Mobile compactor

R & GR

Issued: 2018-04





45 million tons of waste is produced only by the German people per year - If this quantity was loaded in garbage trucks and they were placed one after another, they would reach all around the earth once.

With this, we are less about the quantity of waste than we are about handling of it: Waste material is no refuse - in waste material we see a valuable raw material. To be able to recycle this raw material, fully developed system solutions are required.



The L&M mobile compactor of series R and GR are used as universal compactor in places where large quantities of residual material and recyclable raw material must be highly compacted before transport. This allows optimum utilization of the permissible load capacity of a transport vehicle and with this, cost-effective transport. It is suitable for compacting of residual waste, industrial waste, organic waste, film, paper and cardboard articles.

The low-maintenance, horizontal compaction system is suitable for continuous filling. A stable double sided guide prevents the compaction ram from tilting and/or tipping. Small gaps between the compaction ram and the side walls and the swinging steel stripper in front of the compaction ram ensure that cleaning works in the compaction chamber are nearly not necessary.



The mobile compactors of this series are suitable for the transport and the discharge by roller contact tipper vehicles as per DIN 30722-1 and comply with the requirements of the applicable standards & directives.

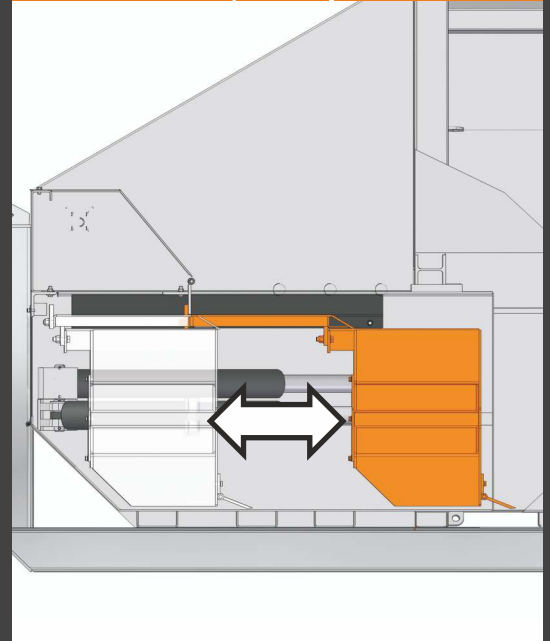


Production is guaranteed in our parent plant in Germany and the deployment of qualified personnel and most modern robot welders, as well as a standardized fixture construction provide for continuously high quality.

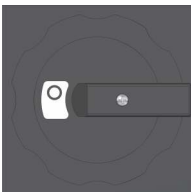
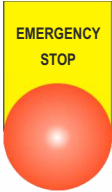


Supplied as standard

- Horizontal compaction system (with swinging steel stripper in front of the compaction ram and limit switch function at the front/extended)
- Hook retainer on the filling side of the plant, can be folded away
- Shunting castors on the outlet opening of the plant
- Container with framing or side wall without framing
- Door on the discharge opening (with ratchet lock)
- Safety chain on the discharge door as safeguarding against accidental swivelling of the door)
- Integrated hydraulic unit (in compaction head)
- Pressure monitoring manometer with shut-off valve
- CEE plug with integrated phase change & main switch.
- Time relay for controlling the runtime of the compactor
- Declaration of conformity & documentation
- One-colour painted in RAL colour (incl. corrosion protection class C3).

Horizontal ram compaction system



Standard control elements

-  „ON/OFF“- main switch on the right side in pressing direction on the filling side (lockable with optional padlock)
-  "EMERGENCY STOP"-push-button on the left and the right side of the filling opening in pressing direction
-  „0 - I“ key switch on the right side in pressing direction on the filling side
-  "Operation"- signal lamp (white) on the right side of the filling opening in pressing direction

SPB LM 10 R with especially low filling height and lengthwise divided



SPB LM 13 R-FMP in special design, as well as additional rope and chain



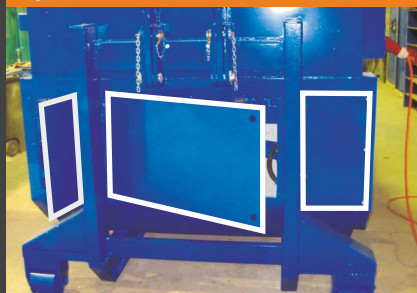
SPB LM 10 GR with warning signs as per Vkl. 82/10



Toggle closures on the discharge opening (e.g. in case of liquid-tight design)



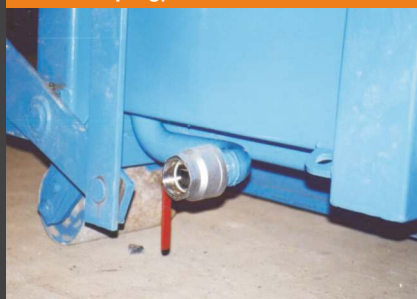
Large maintenance flaps protected by limit switches as standard



Rubber sealing on the discharge opening (e.g. in case of liquid-tight design)



Water drain with ball valve (or screwed plug)



Safety chain on the discharge door (avoids uncontrolled springing open)



SPB LM 12 R with attached bin tipper for 2x120 l waste container (MGB)



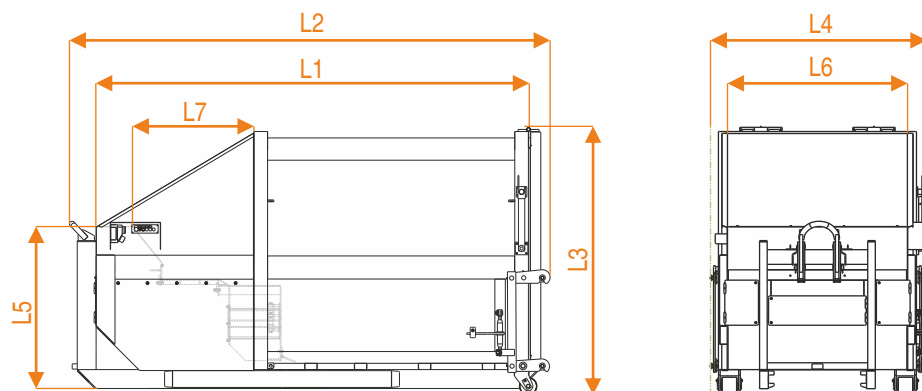
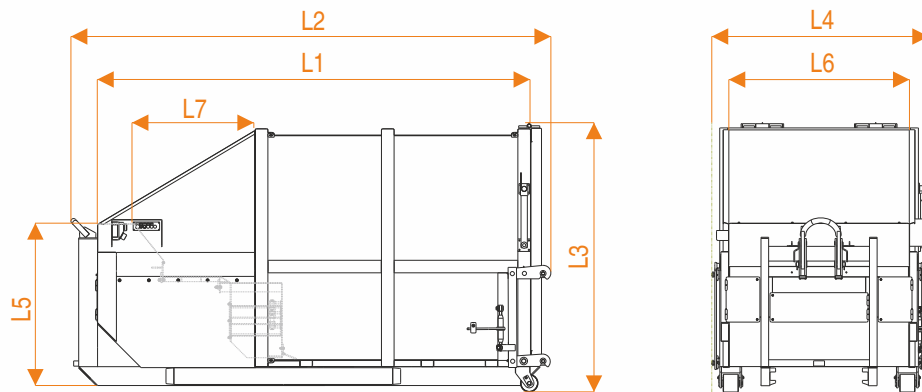
Additional equipment

We are offering you a wide range of additional equipment. Among others there are:

- Several lid variants, e.g. our patented combined cover (hinged on the backside or opens partly lengthwise) covering the filling opening, relieved by a gas-pressurized spring
- Easy control due to programmable, self-monitoring electrical control
- Filling level warnings (75% and/ or 100%)
- Pendulum flap instead of standard door on the discharge opening
- GSM - alarm systems / GPS-module
- Switching off of compaction ram at the front and at the rear
- Several design variants (e.g. for ramp operation)
- Light barriers as start device and / or as overfill prevention device
- Water drain with ball valve or screwed plug
- Water spraying device
- Liquid-tight design (with rubber sealings / increased compaction head / toggle closure or central locking device on the discharge door)
- Remote control in various designs
- Attached bin tipper for all usual large waste containers and special containers
- Rope and / or chain support block additionally or instead of the standard hook retainer
- Warning signs as per Vkl. 82/10

Further additional equipment is available on request.

Please contact us!



Technical data - R & GR

Name		LM 10		LM 12		LM 13		LM 14	
		R	GR	R	GR	R	GR	R	GR
Container capacity	(m ³)	10		12		13		14	
Clear container length	(mm)	4,140		4,505		4,855		5,225	
Maximum length (L2) *1	(mm)	4,630		4,995		5,335		5,710	
Maximum height (L3)	(mm)					2,550			
Maximum width (L4)	(mm)					1,995			
Filling opening	Height (L5)					1,505			
	Width (L6)					1,655			
	Length (L7)					1,165			
Compaction ram	Height					720			
	Width					1,640			
	Dipping depth					270			
Time per working stroke	(s)					45			
Volume	per stroke					1.2			
	per hour					96			
Pressing force	(kN)					300			
Net weight	(kg)	3,580	3,700	3,700	3,820	3,820	3,940	4,010	4,130
Overall weight	(kg)					15,000			
Driving power	(kW)					4			
Cekon plug	(A)					32			

Comments

All details are subject to change

Technical changes reserved

All details refer to the series products

Further types of construction / size available on request

