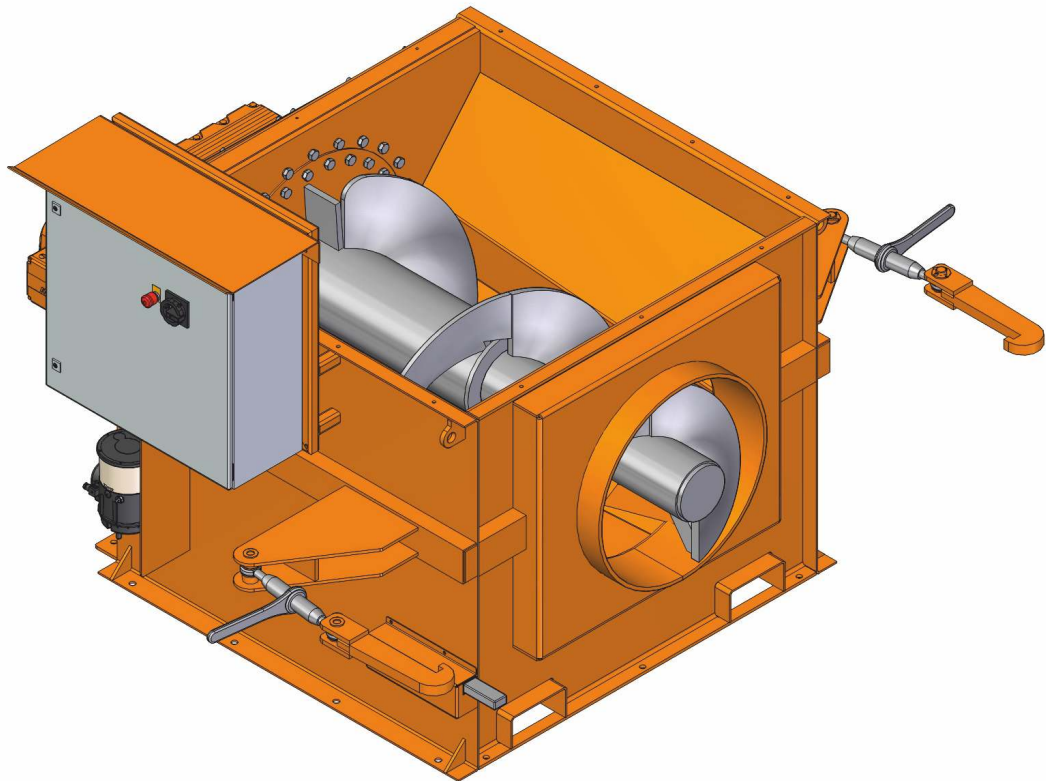


Static compactors

SVS

Issued: 2018-04





45 million tons of waste is produced only by the German people per year - If this quantity was loaded in garbage trucks and they were placed one after another, they would reach all around the earth once.

With this, we are less about the quantity of waste than we are about handling of it: Waste material is no refuse - in waste material we see a valuable raw material. To be able to recycle this raw material, fully developed system solutions are required.



Static compactors of series SVS are used in places where large quantities of residual material and recyclable raw material must be compacted prior to transport.

This allows optimum utilization of the permissible load capacity of transport vehicles and with this, cost-effective transport.

This compactor is suitable for continuous loading of residual waste, industrial waste, organic waste, wet waste and, depending on its configuration; it can be used for large-size paper and cardboard articles, as well as PET and non-returnable wooden pallets.

Because only the press container is transported that is coupled to the compacting system, all in all, more material can be transported than it is possible with mobile compacting systems of the same dimensions.



The static compactor systems of this series comply with the applicable standards and directives.

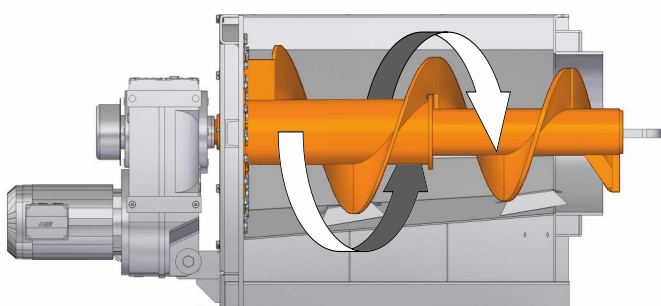


Production is guaranteed in our parent plant in Germany and the deployment of qualified personnel and most modern robot welders, as well as a standardized fixture construction provide for continuously high quality.

Supplied as standard

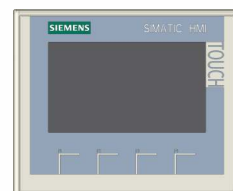
- Screw conveyor compaction system
- Control panel, separately placeable
- Operating hours counter in the control cabinet
- Freely-programmable PLC controls
- Automatic central lubrication system with electronic monitoring
- Automatic reversing mode for full-container warning
- Manual coupling (with ratchet) for L&M press container
- CEE socket with integrated phase change & main switch
- Frequency converter
- Control cabinet with control elements & electrical connection, installed on the right side in pressing direction
- Timer for controlling the runtime of the compactor
- Declaration of conformity & documentation in German
- One-colour painted in RAL colour (incl. corrosion protection class C3)

Screw conveyor compaction system

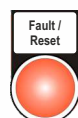


Standard control elements

- "ON / OFF" main switch, lockable with optional padlock) on the control cabinet
- "EMERGENCY STOP" push-button on the control cabinet and the control panel
- "0 - I"-key switch on the control panel
- "Remote / Local"-key switch on the control panel
- Touch panel on the control panel



- "Fault / Reset" illuminated push-button (red) on the control panel
- "Operation" signal lamp (white) on the control cabinet



Automatic central lubrication system for the screw bearing (series)



Safety system / container request



Hopper extension with emergency pull cord and remote control switch



SVS 15 with hydraulic coupling (with integrated hydraulic unit)



SVS 11 with pusher (for optimized drawing in of material)



SVS 11 with pusher (for optimized drawing in of material)



SVS 15 for PPK (with pull-in equipment for cardboard articles)

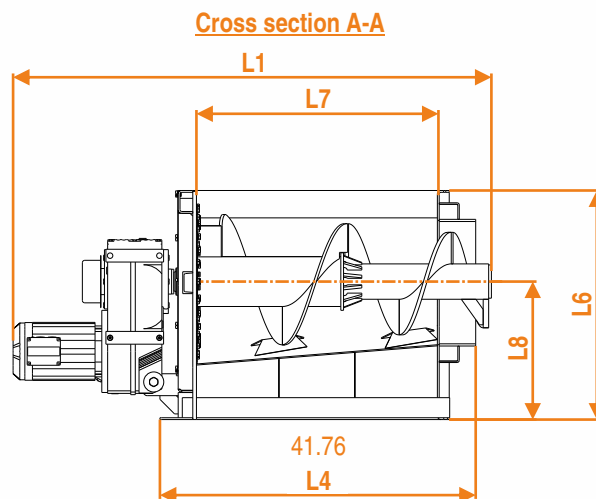
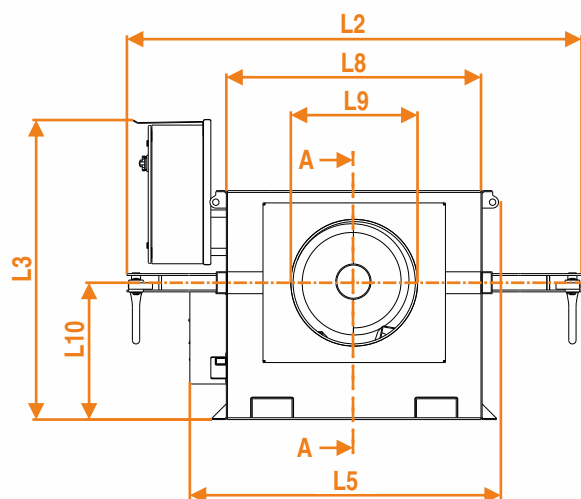


Additional equipment

- We are offering you a wide range of additional equipment. Among others there are:
- Several coupling variants including a fully automatic version
- Several lid variants (hinged on the backside / divided lengthwise, hydraulic, manual,...)
- Individual hopper designs (e.g. bifurcated hopper, wall-connected hopper,...)
- Light barriers or ultrasonic probes as start device and / or as overflow prevention device
- 75 %- and / or 100 %-full container warnings with signal lamp, flashlight and / or signal horn
- GSM alarm system in various designs
- Remote control in various designs
- Guide rails or centering plates for exact positioning of the press container or if soil is not load-bearing
- Varying pull-in equipment (e.g. for wood, PET, or PPK)
- Longitudinal or transverse traversing units for the press container
- Container weighing system
- Attached bin tipperall usual large waste containers as well as special containers

Further additional equipment is available on request.

Please contact us!



| Technical specifications | | | | |
|--------------------------|--------------------------|----------------------|-----------------|--------|
| Name | | | SVS 11 | SVS 15 |
| Plant | Length (L1) | (mm) | 2,350 | 2,620 |
| | Width (L2) ^{*1} | (mm) | 2,500 | |
| | Height (L3) | (mm) | 1,650 | |
| Basic body | Length (L4) | (mm) | 1,720 | |
| | Width (L5) | (mm) | 1,690 | |
| | Height (L6) | (mm) | 1,255 | |
| Filling opening | Length (L7) | (mm) | 1,320 | |
| | Width (L8) | (mm) | 1,390 | |
| | Height (L6) | (mm) | 1,255 | |
| Discharge opening | Diameter (L9) | (mm) | 700 | |
| | Height (L10) | (mm) | 750 | |
| | Ø (from to) | (mm) | 750-500 | |
| Screw | Speed | (min ⁻¹) | 18 | 17 |
| | Torque | (Nm) | 5,800 | 8,400 |
| Volume per hour | | (m ³) | 60 | 90 |
| Driving power | | (kW) | 11 | 15 |
| Electrical connection | Cekon plug ^{*2} | (A) | 63 | |
| | Ground-fault circuit | | Type B / 300 mA | |

Comments

All details are subject to change

Technical changes reserved

All details refer to the series products

Further types of construction / size available on request

^{*1} Depending on the coupling installed, this measure will be greater^{*2} Optionally, our plants can also be equipped with a permanent connection

SVS 15 with hydr. manual coupling and filling from a ramp



2x SVS 15 with PET-punch and filling from conveyor belt



2x SVS15 with bifurcated hopper, PC6.000 and container scale

